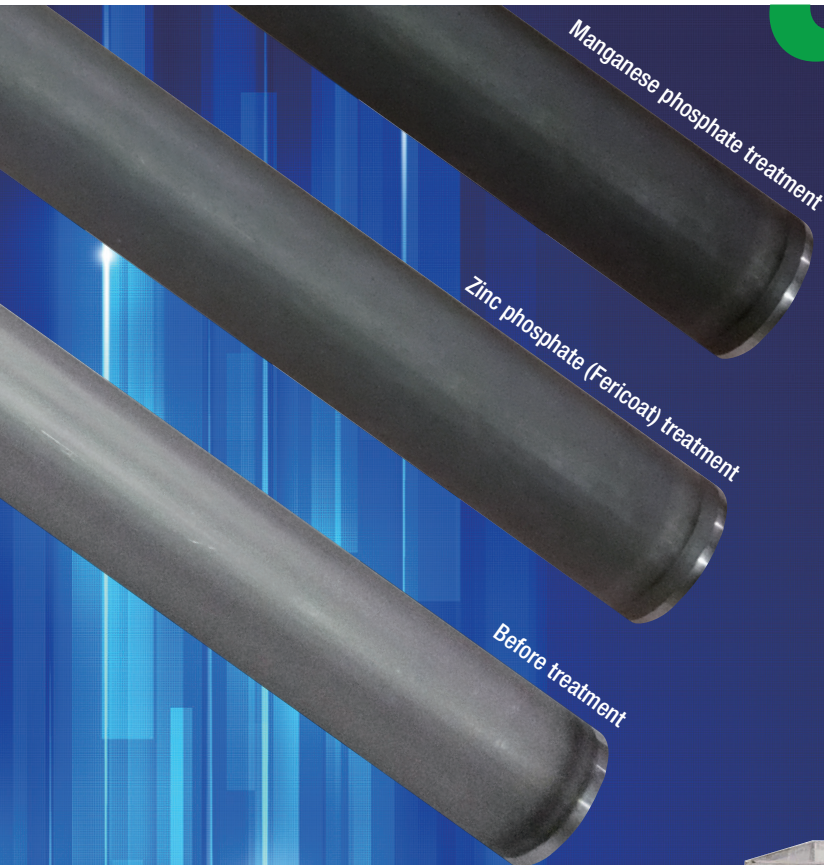


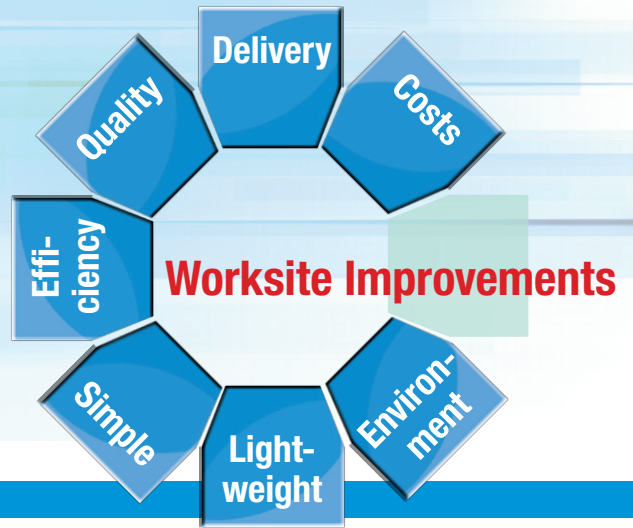
Compact Surface Treatment System **COREMET 7**

Phosphate treatment system developed through worksite improvements

**COREMET 7**







## In-house Surface Treatment Brings In

## Worksite Improvements

### Seven Main Features of COREMET 7

#### 1 Cost Reduction

##### A large-scale reduction of running costs in surface treatment

Compared to outsourcing, the running costs of in-house surface treatment are significantly reduced. In addition to the excellent cost-effective unit, this machine will reduce your overall operation costs.

#### 2 Faster Delivery

##### Stable delivery date management

In-house surface treatment eliminates any delivery delays associated with outsourcing, or loss of transport time or administrative work, and allows you to deliver your products reliably through management by your company.

#### 3 Improved Product Quality

##### Improved and stable quality of the Parker treatment

Best suited for anti-rust treatment and paint base treatment. This unit is used for processing small lots, which prevents workpieces from getting damaged. In-house chemical treatment helps you improve and stabilize the quality of your products.

#### 4 Higher Efficiency

##### Fast and powerful processing capacity

You can carry out a series of processes from degreasing and water rinsing, to film generation and draining on a single piece of equipment in as short as 42 minutes (excluding the startup time). The powerful processing capacity of this unit then allows you to process one workpiece every 6 minutes, about 70 kg of workpieces per hour, and about 600 kg of workpieces per day.

#### 5 Easy to Operate

##### Simple one-step operation

All you need to do is press the start switch, and all the operations will be carried out automatically. In addition, this unit helps you significantly improve work efficiency, requiring only one operator.

#### 6 Light-weight and Compact

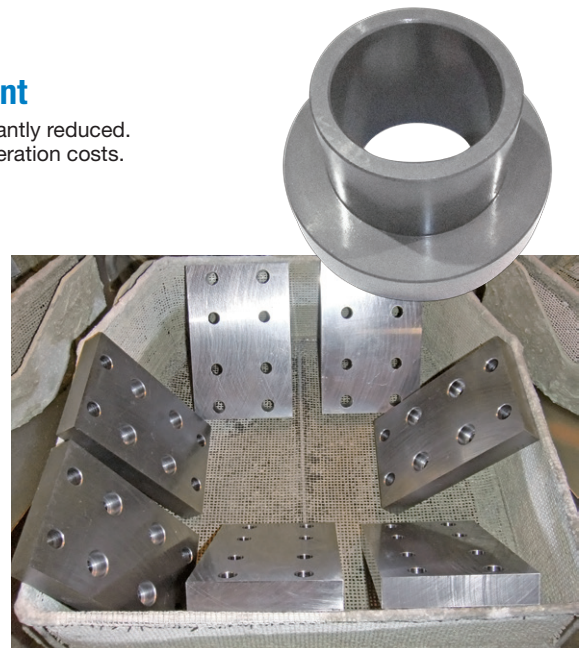
##### A compact body suitable for any installation place

The machine requires little space to install, as each side of its compact main body is only 1.3 m long. In addition, the main body weighs only 150 kg and is equipped with casters, allowing you to move the machine without difficulty.

#### 7 Environmentally Friendly Design

##### An environmentally friendly design for waste liquid treatment and easy cleaning

To replace the treatment solution, simply loosen the plug. The compact tank is divided into partitions, which makes moving waste liquid into a plastic container and cleaning the tank easier.



Before treatment



After zinc phosphate (Fericat) treatment

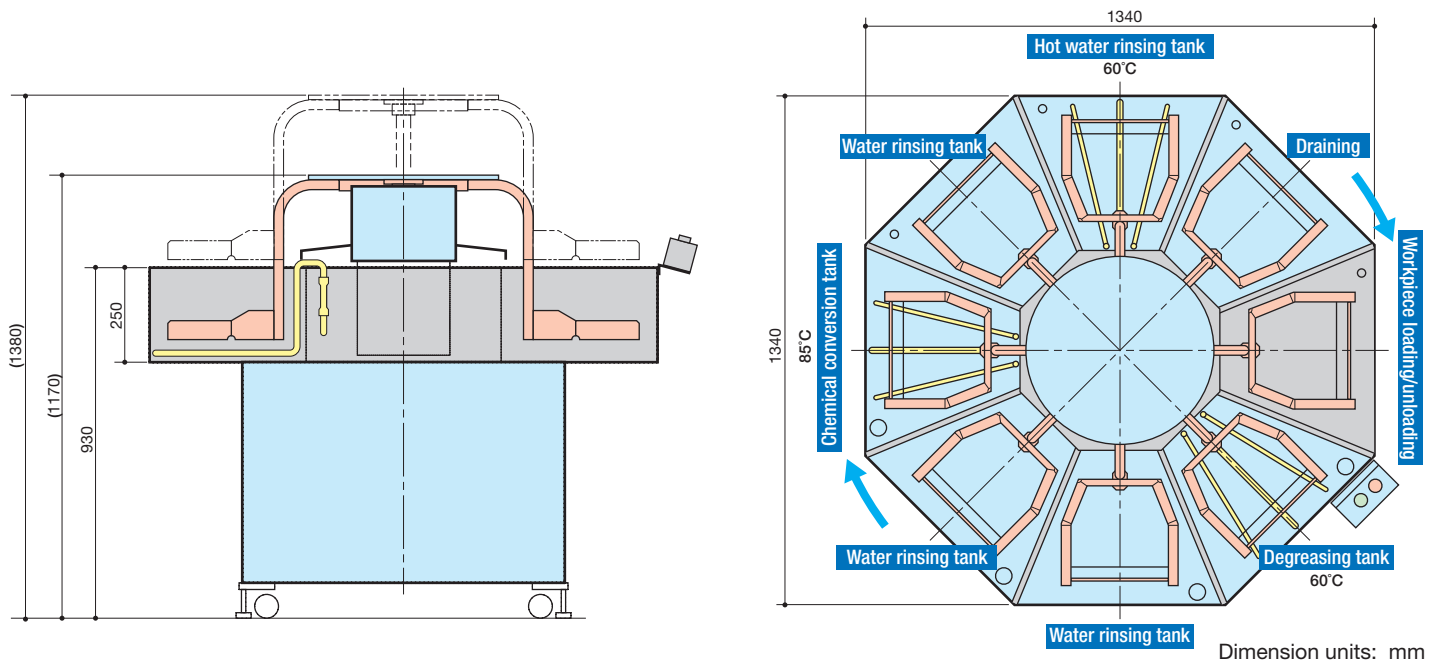
COREMET 7 is a downsized machine developed through on-site voices. This pioneering machine is a compact surface treatment system with a powerful processing capacity and capability of ensuring high product quality, without requiring much space to operate. Its characteristics make the machine suitable for various types of manufacturing sites.

## Main Specifications



| Configuration          |   |  |
|------------------------|---|--|
| Processing method      | Wetted system with impregnation (full dipping method)   |  |
| No. of tanks           | Degreasing tank x 1, water rinsing tanks x 3, COREMET tank x 1, hot water rinsing tank x 1, draining tank x 1 |  |
| Capacity               | Tank body   | 38L  |
|                        | Fluid capacity  | 33L  |
| Chemicals used         | Type  | Fericoat 7 (zinc phosphate film coating agent)                           |
|                        | Temperature   | 80 to 90°C   |
| Capacity               |   |  |
| Processing time        | Automatic   | 6 minutes (sequential processing every 6 minutes), manual mode available |
| Processing capacity    | Max.  | 70 kg/hr (7 kg/basket)   |
|                        | Rated   | 50 kg/hr (5 kg/basket)   |
| Coating film thickness | 5 to 10 µm (when using Fericoat 7)  |  |
| Machine Performance    |   |  |
| Heating system         | Automatically controlled by electric heaters  |  |
| Capacity               | 4 kW x 1, 3 kW x 2  |  |
| Temperature settings   | 30 to 100°C (configurable)  |  |
| Time settings          | Configurable by the unit of one second  |  |
| Water feed             | Manual water feed   |  |
| Safety devices         | Overheating prevention, warning alarm stop function (all heaters), E-stop switches (2 locations)              |  |
| Power Consumption      | 200VAC (3 phases), 10 kW  |  |
| External Dimensions    | 1340 (W) x 1340 (D) x 1380 (H) mm   |  |
| Weight                 | 150 kg (dry weight), 380 kg (solution included)   |  |

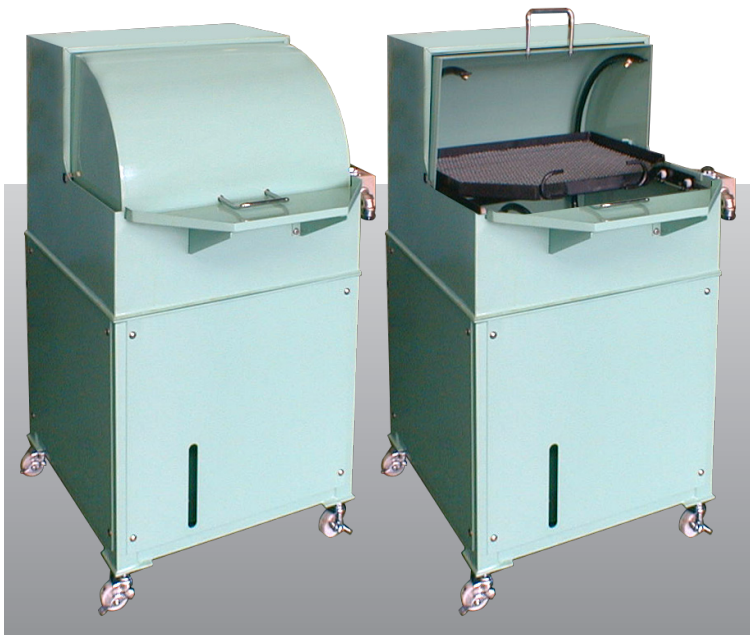
## External Dimension Diagram



We can customize the machine to suit your needs. Please feel free to contact us.

## The New Measure For Anti-rust Treatment

Top and bottom oil application by one-step operation. Delivers improved anti-rust effect.



### Oil Application Unit COA-530

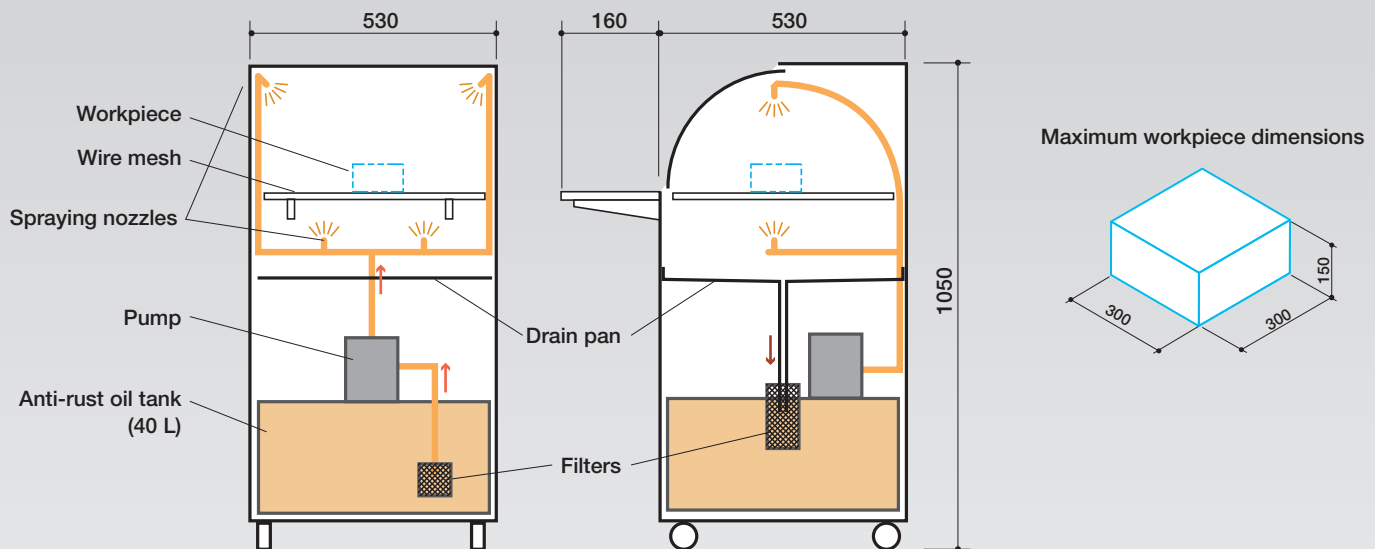
#### Main Features

- A pump makes the anti-rust oil circulate, which prevents oil loss and reduces costs.
- The 4 top and bottom nozzles spray the oil in a way that it is efficiently applied over the entire workpiece surface.
- By closing the cover, you can prevent the oil from spraying around.
- The machine can be used by anyone as it is easy to operate.
- Contact us for information regarding the viscosity of working solutions.

#### External Dimensions and Structure

Power source: 200VAC (3 phases)

Dimension units: mm



\* Specifications, dimensions, and shapes are subject to change without prior notice.

\*Parker and Fericoat 7 are registered trademarks of Nihon Parkerizing Co., Ltd.